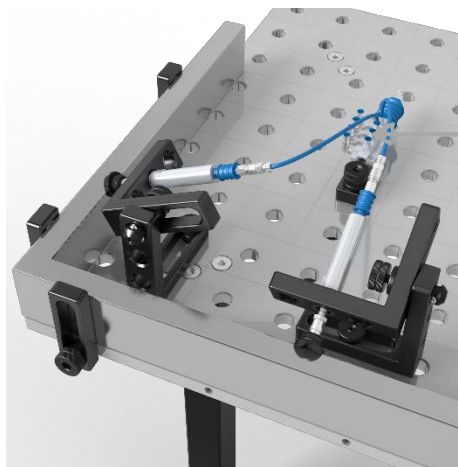




pneumatic cylinder 000855
(long form System 28)



• Divider for max. 8 acceptor
(part no. 000860)

• Flexible tube
(part no. 000882)

• Kupplungsdose
(Artikelnr. 000879)

• Coupling plug
(part no. 000878)

• Slide valve
(part no. 000877)

• pneumatic cylinder long form
(part no. 000881)

• Prisma
(Artikelnr. 280657.1)

• Kugelpin
(Artikelnr. 000883)

• Thread Bushing System 28
(Artikelnr. 280855.1)

By using the Pneumatic Cylinder, you can automate the clamping of your components, in order to maximize time- and cost effectiveness. In addition, automation guarantees precise measurements, such as clamping pressure, cycle times, etc.

The clamping of individual parts can be dissolved by operating the respective slide valve of the corresponding pneumatic cylinder. To dissolve all fixtures in a roundabout, operate the slide valve on the distribution block (part no. 000860).

The coupling sockets/ - plugs lock on the pressure side after separation.

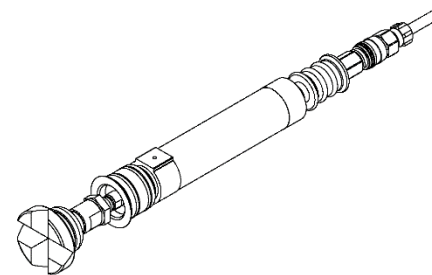
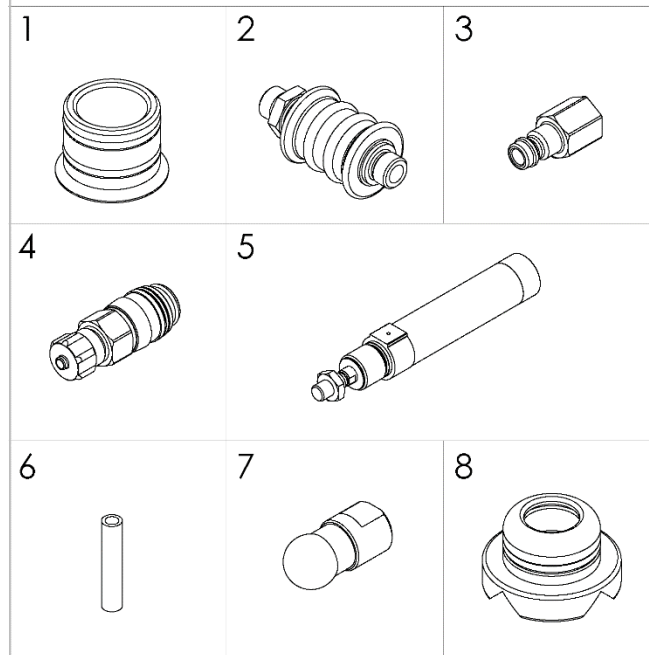
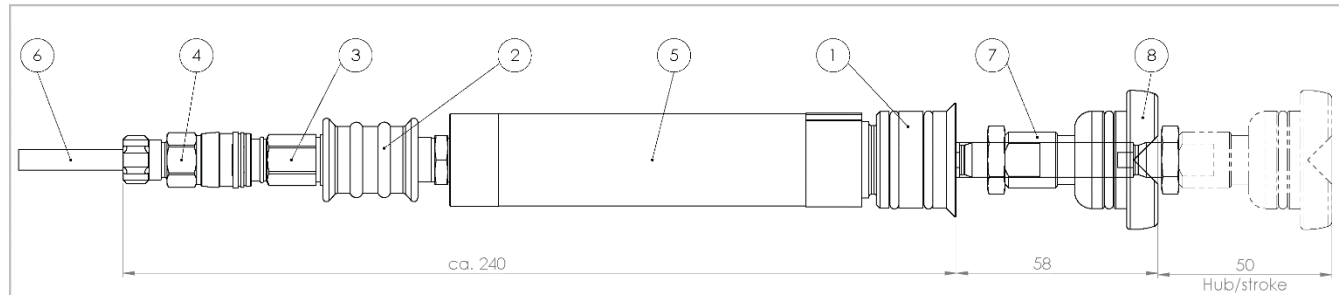
The life expectancy of the cylinders will be reduced by applying transverse loads.

Description:

- Single action pneumatic cylinder
- Positioning detection for proximity switch
- Damping by elastic cushioning rings/- pads on both sides
- Pneumatic connection G 1/8
- Operating pressure 1,2...10 bar
- Length when piston is retracted 130 mm
- Maximum width 40 mm
- stroke 1...50 mm
- theoretical force at
 - 6 bar, forward 265 N
 - - 8 bar, forward 353 N
 - - 10 bar, forward 442 N



pneumatic cylinder 000855
(long form System 28)



pos	pc	articlennr.	name	Benennung
1	1	000855.1	threaded bush M22x1,5	Gewindebuchse M22x1,5
2	1	000877	slide valve	Schiebeventil
3	1	000878	coupling socket	Kupplungsstecker
4	1	000879	coupling plug	Kupplungsdose
5	1	000881	pneumatic cylinder long form	Pneumatikzylinder lange Form
6	1	000882	flexible pipe	Schlauch
7	1	000883	Spherical Pin Pneum.Clamping	Kugelpin für Pneum.Spanner
8	1	280657.1	Prism	Prisma